

INTERACTIVE MAP TO SUPPORT TRANSPARENT PLANNING AND COMMUNITY ENGAGEMENT



Patricia Cosmopoulos

*Geomatics Services Lead, Impact Assessment Agency of Canada
Canada*

Patricia.Cosmopoulos@iaac-aeic.gc.ca

Impact Assessment Agency of Canada - Canada.ca



Overview

Today's story

- Putting projects and impacts in context
- Where to find the Interactive Map
- See the full picture
- Explore data and tools
- Why this map matters
- Resources & support to continue exploring



Putting projects and impacts in context

One map. Full context.

- Brings assessment, environmental, Indigenous, and community information together

Projects shown as they really are

- Replaces point locations with two-dimensional project footprints
- Shows true project scale, location, and surrounding context

Designed to grow

- Expanded in December 2024
- Added project footprints, environmental layers, and Indigenous data



Where to Find the Interactive Map

Canadian Impact Assessment Registry

The Registry is Canada's official information hub for development projects subject to the *Impact Assessment Act*. This interactive website helps you search and participate in federal assessments across Canada and on federal lands.



Search by keyword(s) or reference number

Search

Interactive Map

[Need help?](#)

Suggested searches

- [All results](#)
- [Projects on federal lands](#)
- [Projects with permits](#)
- [Impact assessments](#)
- [Regional and strategic assessments](#)

Get involved

[Subscribe for project updates](#)

Sign up to receive personalized email notifications on project updates.

[Comment on active assessments](#)

View open comment periods and contribute your input on projects under federal review.

[Apply for funding opportunities](#)

Explore funding opportunities that support your participation in projects under federal review.

Registry Home Page

Search by keyword(s) or reference number

SEARCH

Crawford Nickel Project

Canada Nickel Company is proposing the construction, operation, decommissioning and abandonment of an open-pit nickel-cobalt mine and on-site metal mill, located 42 kilometres north of Timmins, Ontario. As proposed, the Crawford Nickel Project would have a mine ore production capacity of 240,000 tonnes per day and a mill ore input capacity of 120,000 tonnes per day. The project would operate for about 41 years.

[View interactive map](#)



Latest update

May 30, 2025 — The Impact Assessment Agency of Canada [provided comments](#) on the Crawford Nickel Project Impact Statement.

At a glance

Planning ✓	Impact Statement ⌚	Impact Assessment ...	Decision Making ...	Post Decision ...
---------------	-----------------------	--------------------------	------------------------	----------------------

[Impact Statement](#)

In progress

1025/1095 days

Disclaimer

- Location**
43 km north of Timmins (Ontario)
- Nature of Activity**
Mines and Minerals
- Assessment Status**
In progress
- Start Date**
2022-08-08
- Proponent**
Canada Nickel Company
- Authorities**
Impact Assessment Agency of Canada

All Project Pages



Impact Assessment
Agency of Canada

Agence d'évaluation
d'impact du Canada

Canada

See the Full Picture

Find what matters

- Locate assessments, projects, and areas of interest quickly

Explore data in context

- View project footprints alongside environmental and Indigenous information

Analyze and reuse information

- Overlay layers, explore proximity, identify patterns, and export data



Navigate to the [Interactive Assessment Map](#)



Impact Assessment
Agency of Canada

Agence d'évaluation
d'impact du Canada

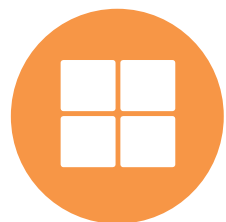
Canada

Navigating the Map

The screenshot displays the IAAC Interactive Assessment Map interface. At the top left, the title "IAAC Interactive Assessment Map" is visible. A search bar at the top center contains the text "Find a project or place". The top right corner features the "Registry" logo. On the left side, a vertical toolbar contains several icons, with callouts pointing to "Layer lists" (the top four icons) and "Analysis tools" (the bottom four icons). The main map area shows a geographical view of Canada and the United States, with several numbered markers (2, 3, 4, 5, 7) indicating project locations. A "Cluster Summary" pop-up window is open, displaying the following text: "Cluster Summary", "Zoom to", "Browse features", "This cluster represents 3 features.", and "The predominant value of Status within this cluster is: In progress". A callout points to this window as the "Feature information box". On the right side, a "Map Information" panel is open, containing the following text: "Get started with the Registry's **Interactive Assessment Map** by typing a keyword in the top search to locate a project or an area of interest. Start to **visualize** and **explore** the information on the map by selecting from the data layers available in the top four buttons in the left toolbar. For more information see the [Quick Reference Guide](#) and [Layer Sources](#). Refer to the [Detailed Guide](#) or watch our [new video](#) for step-by-step instructions on how to use the map and the functions available. For technical assistance, contact us at: geomatics-geomatiques@iaac-aeic.gc.ca **Third-party information liability disclaimer:** The Proponent geospatial data files are provided by external sources. The Government of Canada is not responsible for the accuracy, reliability, or currency of the information supplied by external sources. Content provided by external sources is not subject to official languages, privacy, and accessibility requirements.



Available Data Layers



Assessment Layers

Current, completed, and terminated assessments



Environmental Layers

Such as: Species at risk, national parks, and reserves.



Proponent Data Submissions

Grouped by region & by project name



Indigenous Layers

Such as: First Nation communities and treaty boundaries.



Proponent Data

The screenshot displays the IAAC Interactive Assessment Map interface. At the top, there is a search bar with the text "Find a project or place" and a "Registry" link on the right. On the left side, a vertical toolbar contains several icons. A "Proponent Data Submissions" panel is open, listing various projects under three regions: Pacific and Yukon Region, Prairie and Northern Region, and Ontario Region. The Ontario Region is expanded, showing a list of projects including Alexandra Bridge Replacement, Bruce C Nuclear, Crawford Nickel, Deep Geological Repository for Canada's Used Nuclear Fuel, Georgina Island Fixed Link, and Marten Falls Access Road. Each project entry has an eye icon and a list icon. A map in the center shows the Crawford Nickel Project footprint highlighted in purple. Orange callout boxes with arrows point to the "Project footprints" label, the "Expand region" label, the "Toggle project layer visibility" label, and the "Explore footprint" label. A large orange rounded rectangle on the right contains a list of instructions for exploring project information.

IAAC Interactive Assessment Map

Find a project or place

Registry

Project footprints

Proponent Data Submissions

- > Pacific and Yukon Region
- > Prairie and Northern Region
- ▼ Ontario Region
 - > Alexandra Bridge Replacement / Remplacement du pont Alexandra
 - > Bruce C Nuclear / Centrale nucléaire Bruce C
 - > Crawford Nickel / Nickélfifère Crawford
 - Deep Geological Repository for Canada's Used Nuclear Fuel / Dépôt souterrain en couches géologiques profondes du combustible nucléaire irradié du Canada
 - > Georgina Island Fixed Link / Lien fixe de l'île Georgina
 - > Marten Falls Access Road / Route d'accès Marten Falls (2023-01-03)

Expand region

Toggle project layer visibility

Explore footprint

Explore project information submitted by proponents:

- View proponent-submitted project footprints on the map
- Use the "eye icon" to display project data (e.g., Crawford Nickel)
- Select a footprint to explore detailed information

5 km

Esri, NASA, NGA, USGS | Province of Ontario, Esri, Canada, Esri, TomTom, Garmin, SafeGraph, METI/NASA, USGS, EPA, NPS, USDA, NRCan, Parks Canada | Sources: NRCan, ... Powered by Esri



Tools to explore, analyze, and understand



Filter



Add Data

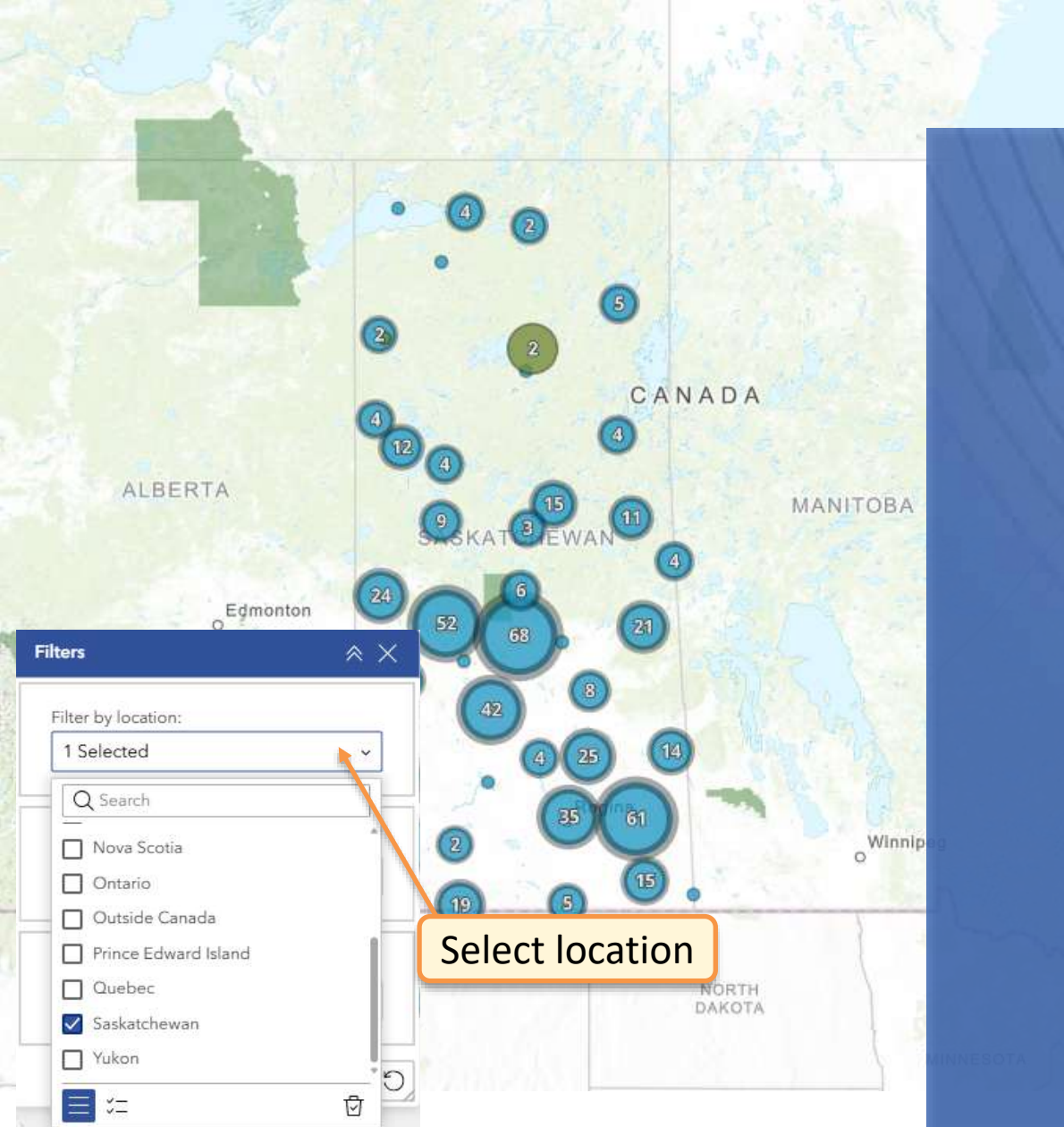


Nearby



Draw & measure



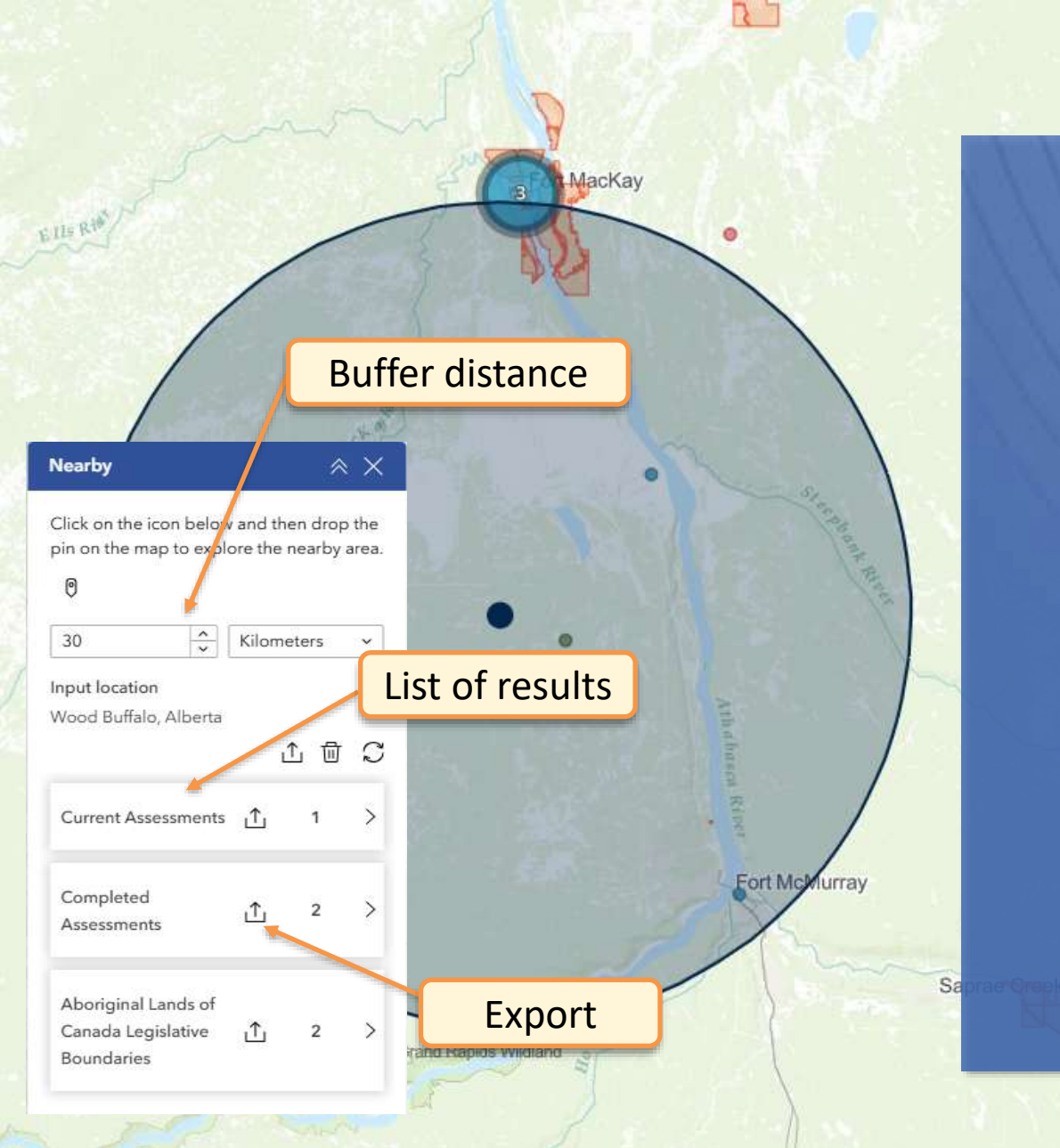


Filters

Narrowing focus on what matters

- Narrow search results by place or assessment characteristics
- Changes appear instantly on the map
- Export results for further analysis in other applications





Nearby

Explore what's nearby

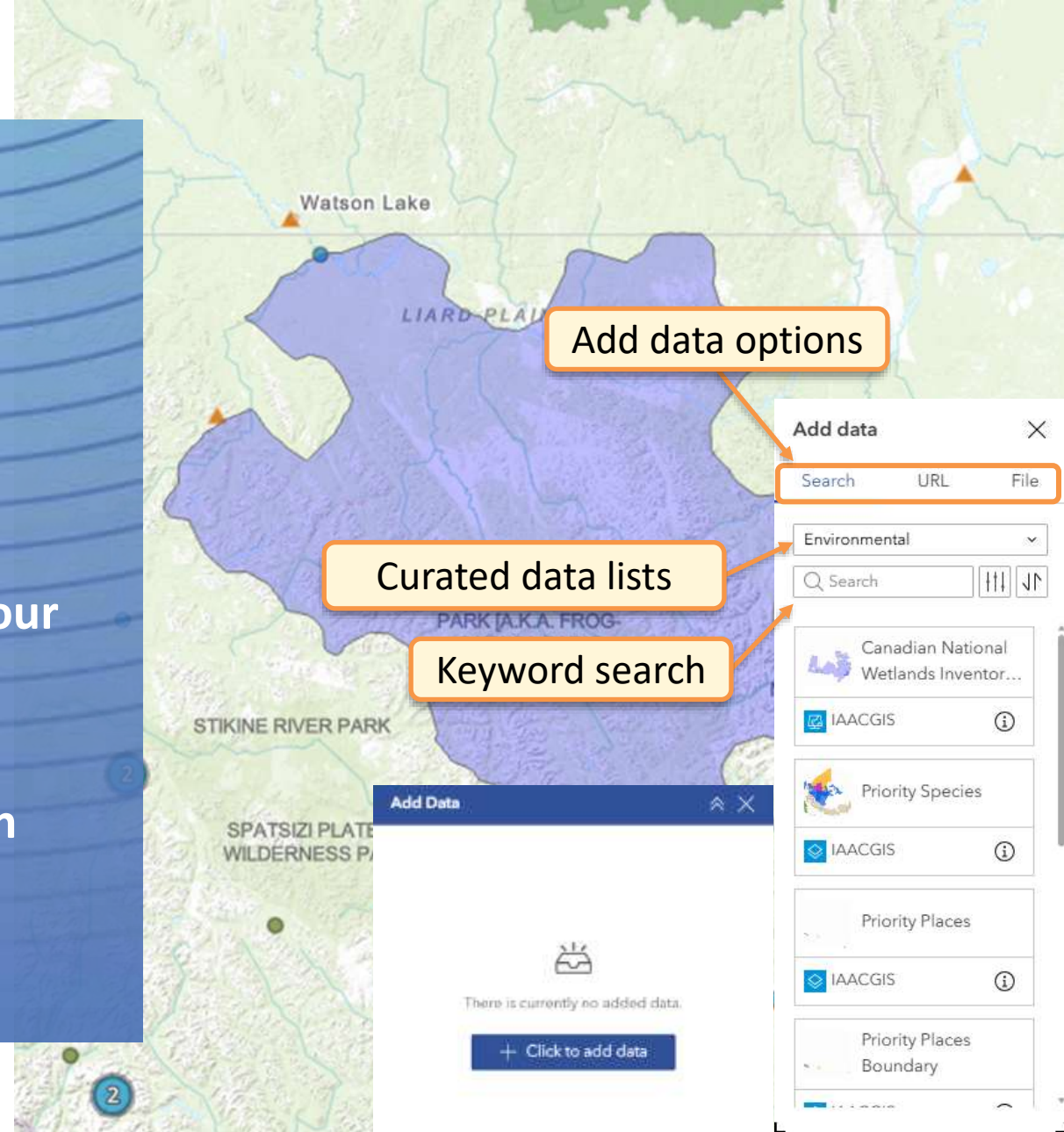
- Define an area of interest and search radius
- Instantly see overlapping features on the map
- Review results and export data

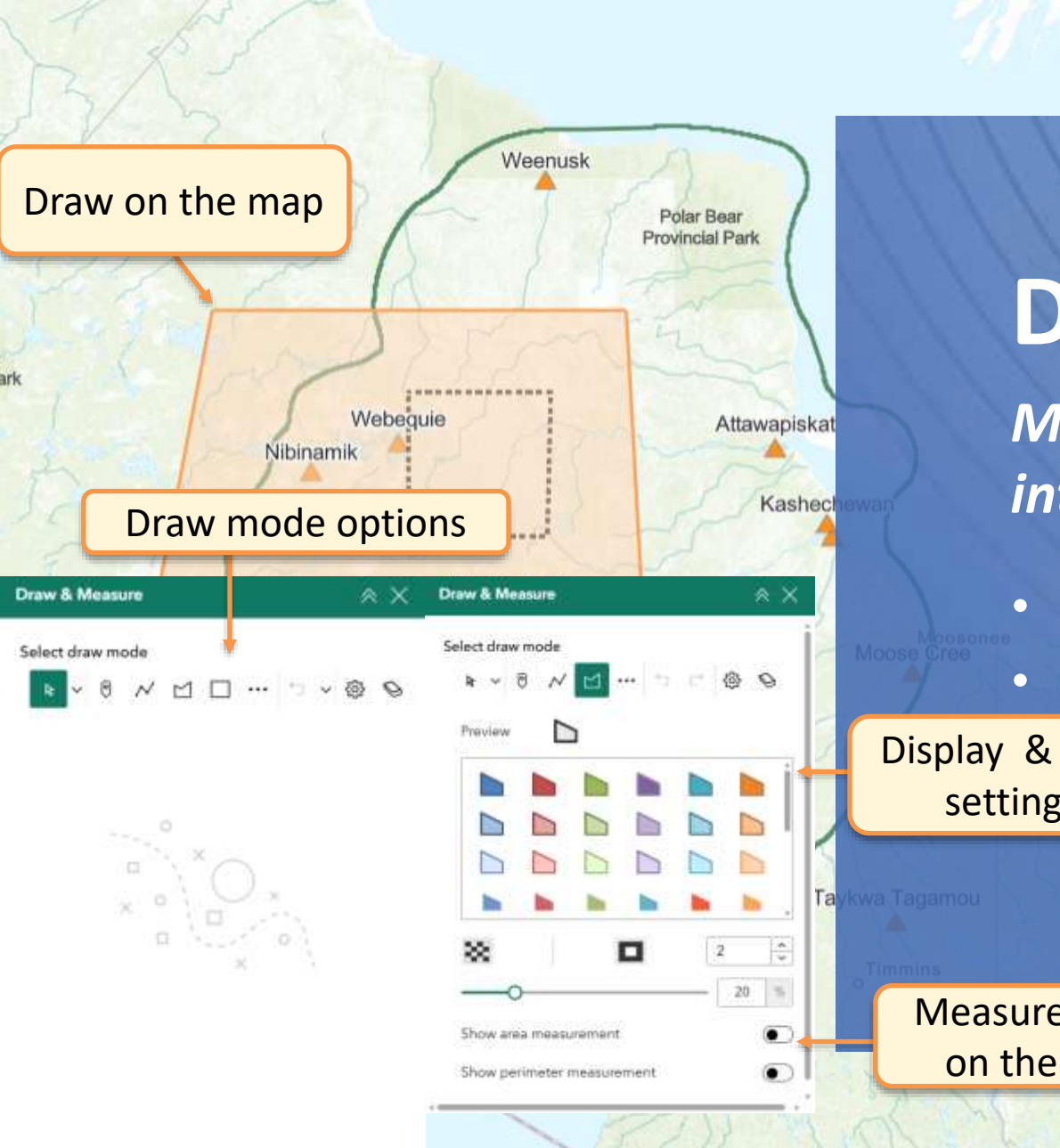


Add Data

Adding data for additional context

- Add external data from trusted sources or your own files
- Find data using a keyword search
- Include web services or upload files to enrich context





Draw & Measure

Measuring distance & highlighting areas of interest:

- Measure distances and areas of interest
 - Visually highlight risks and considerations
- Support planning and project feedback

Display & style settings

Measurements on the map



Key Takeaways

Plan and assess projects with context

- View proposed project footprints alongside environmental, Indigenous, and community information

Explore potential interactions and impacts

- Combine data layers, examine proximity, and understand what may be affected

Support informed participation and decisions

- Access the same trusted information used throughout the assessment process



Resources & Support

Access the Interactive Map

- Scan the QR code or access the map through the Canadian Impact Assessment Registry (Canada.ca/CIAR).

Learn more

- Use the [Quick Reference Guide](#) and [Layer Sources](#).
- Follow step-by-step instructions in the [Detailed Guide](#) and [overview video](#)

Get support

- Contact the IAAC Geomatics Team:
- geomatics-geomatiques@iaac-aeic.gc.ca



Scan the QR code
or access the map
through the Canadian
Impact Assessment Registry





IAIA26
QUÉBEC CITY, CANADA

Let's continue the conversation!

Message me your questions or comments in the IAIA26 app.

Patricia Cosmopoulos

*Geomatics Services Lead, Impact Assessment Agency of Canada
Canada*

[Patricia \(Yota\) Cosmopoulos | LinkedIn](#)

#iaia26

[Impact Assessment Agency of Canada - Canada.ca](https://www.iaia26.ca)