

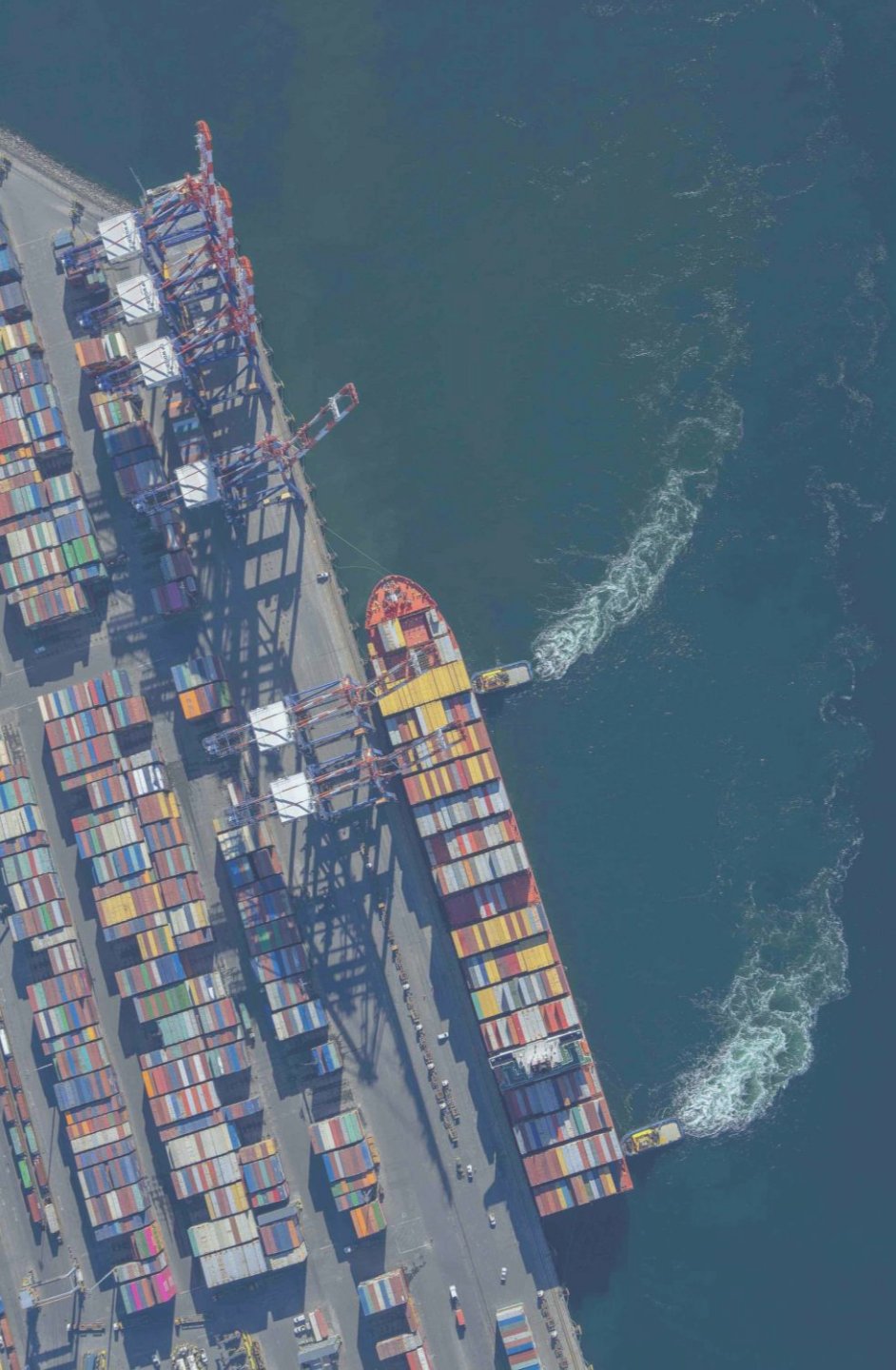
# Community Health and Safety Conditions in Unprecedented Industrial Development Contexts



**(Mars) Marcelle Moreira dos Santos**

*Arrowsmith Gold Inc., Gitga'at First Nation  
Canada*





## GITGA'AT FIRST NATION AND PRINCE RUPERT

Gitga'at members live in in the City of Prince Rupert and/or have family members that live there (estimated at least 100 Gitga'at households in Prince Rupert).

The City of Prince Rupert is an important service hub for Gitga'at First Nation– members regularly access goods and services from the city.

A multitude of industrial projects are in development, expansion, operational and proposed.



Photo courtesy of Austin Basso

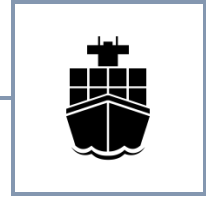
## METHODOLOGY

### SUPPLEMENTAL COMMUNITY HEALTH AND SAFETY ASSESSMENT

**Quantitative:** Gitga'at Community Health Monitoring Data, Gitga'at Urban Health Survey and AIS shipping data assessment

**Qualitative:** Key Informant Interviews with health and social service providing service in the Prince Rupert area, senior management

# KEY FINDINGS



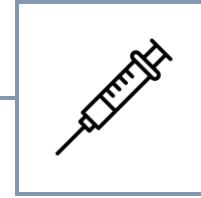
Shipping Traffic



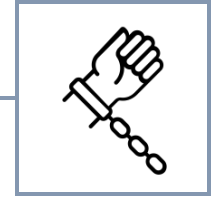
Healthcare Crisis



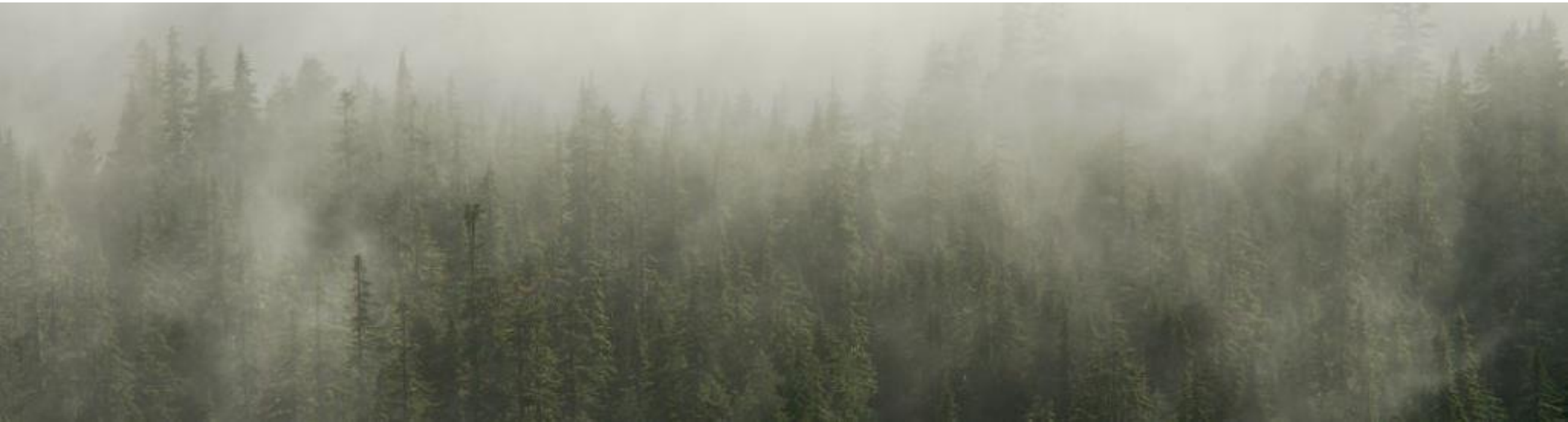
Housing Crisis



Opioid Crisis

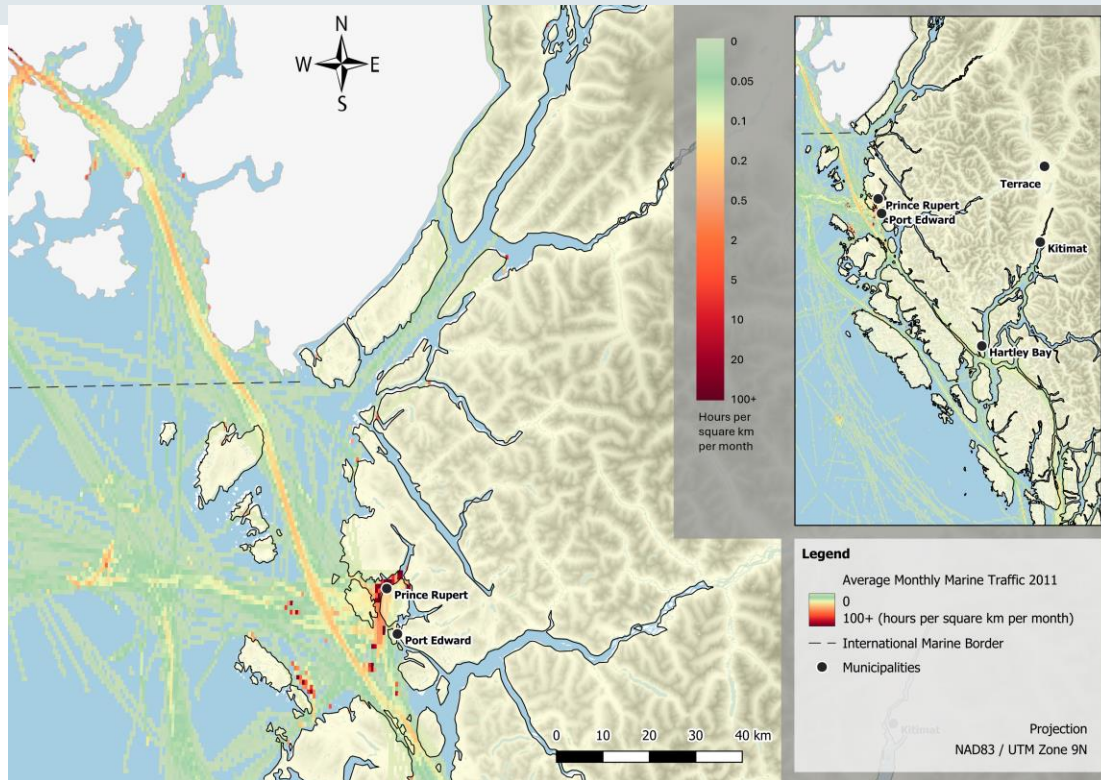


Human  
Trafficking Crisis

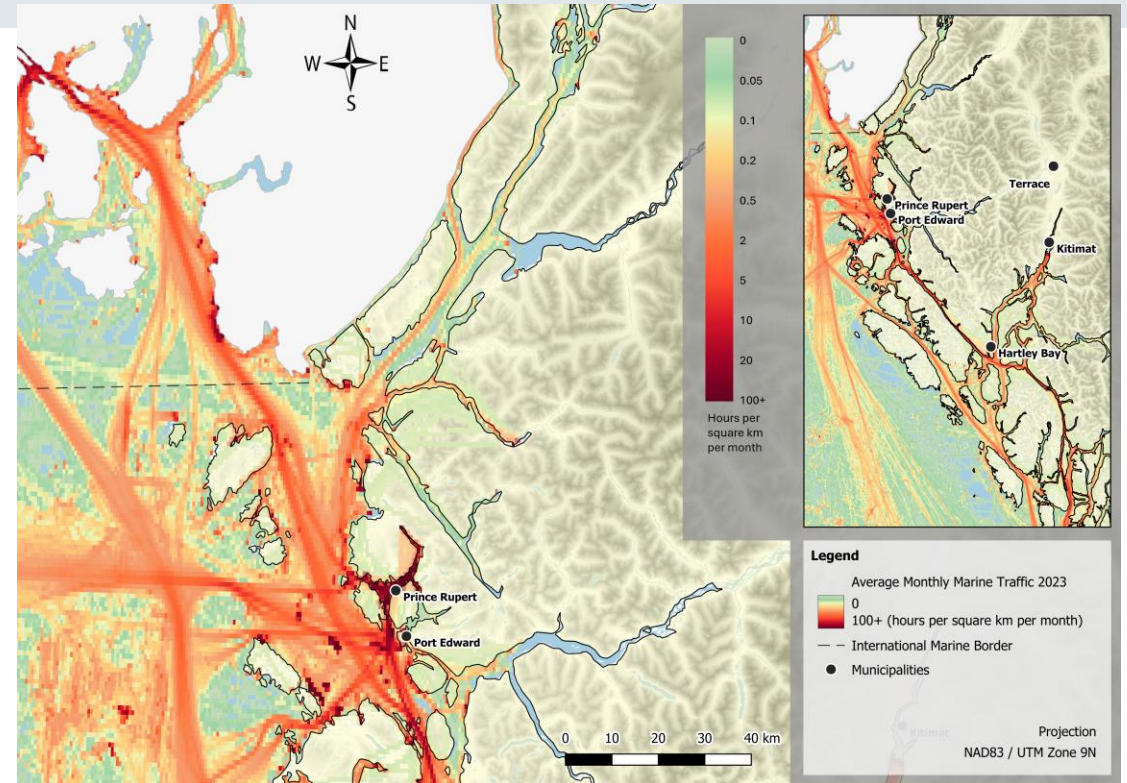




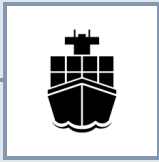
# Shipping Traffic



All vessel shipping density, 2011

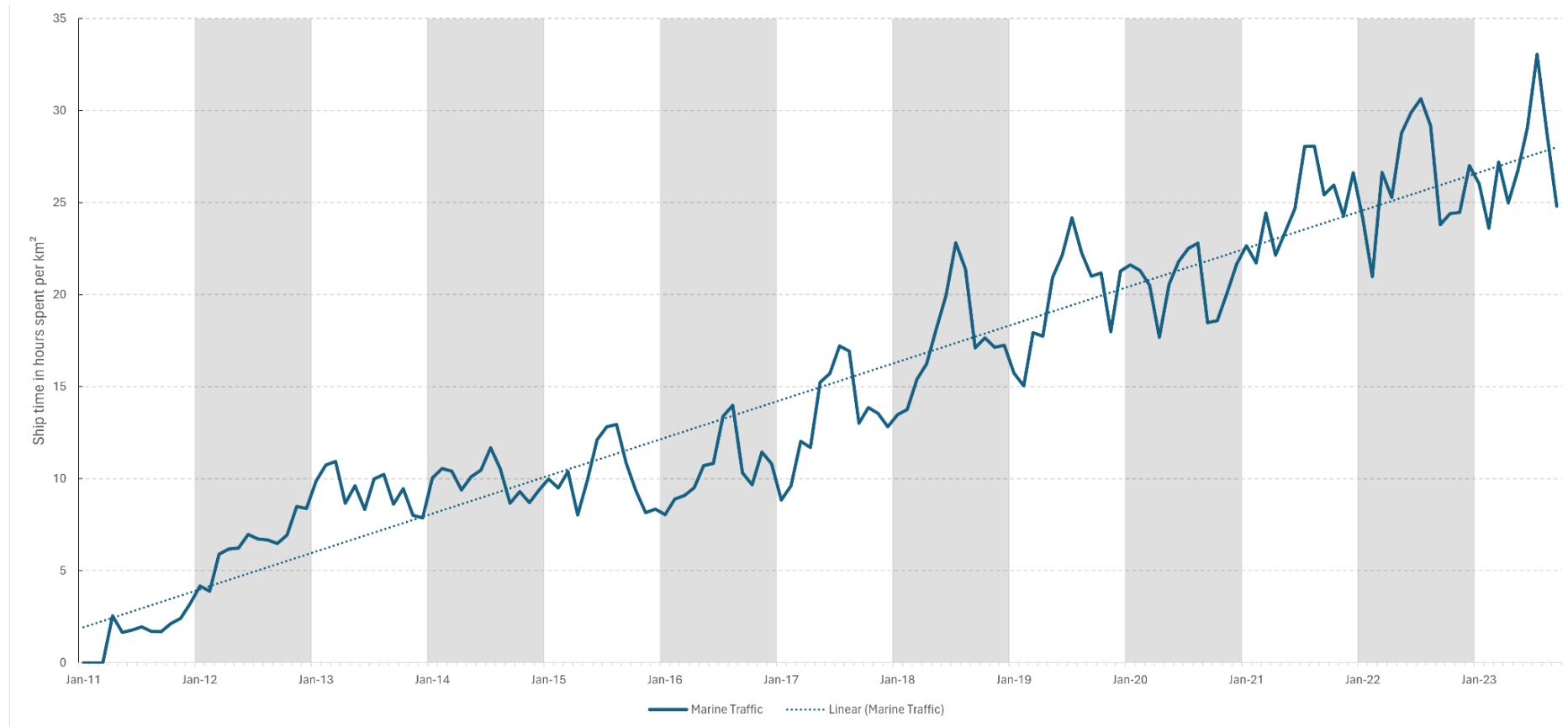


All vessel shipping density, 2023



# Shipping Traffic

Average vessel density (all vessel types) in Gitga'at TUOS sites, 2011-2023





# Healthcare Crisis

- ER diversions in PR in coming months
- 1 in 3 healthcare positions are vacant
- 4,155 unattached people in Prince Rupert LHA
- 45% of households in the Gitga'at Survey on a waiting list for a health service in Prince Rupert
- **Link between influx of project workers and health service strain<sup>2</sup>**





# Housing Crisis



## \$2061 AVERAGE COST OF RENTAL

From a scan of properties in PR on Marketplace, Kijiji, and Airbnb in Jan 2024



## 87% OF HOMELESS POPULATION

In Prince Rupert identifies as Indigenous. Homelessness has risen sharply since 2017



## 18 HEALTHCARE STAFF

Left their positions from Northern Health in PR due to housing problems in 2023



## ~90% OF PEOPLE

Using transitional housing facilities in Prince Rupert identify as Indigenous



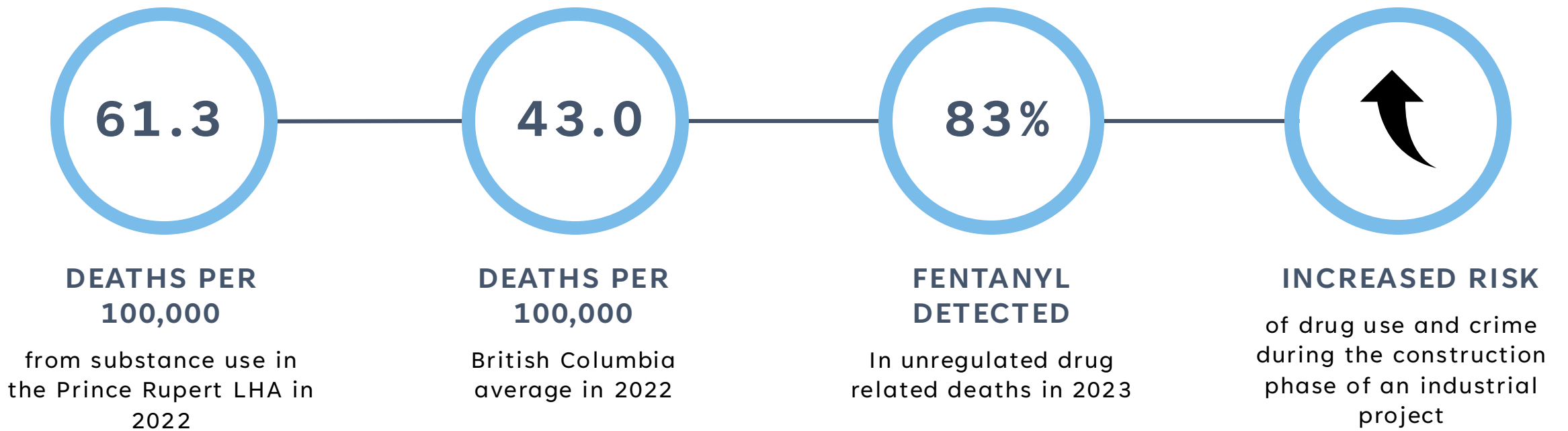
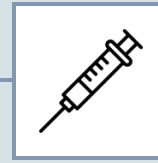
## DEMONSTRABLE LINK

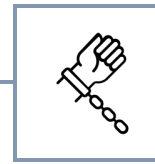
Between industrial extractive projects and reduced housing availability<sup>3,4</sup>

3. Aalhus, M., Laura M. Lee Consulting, British Columbia. Northern Health Authority, & BC Centre for Disease Control. (2018)

4. Shandro, J. (2014) Summary Report for the Regional Health Forum on Community Health and Extractive Industry Development. Saik'uz, British Columbia

# Opioid Crisis





# Human Trafficking Crisis

**900% INCREASE**

In police reported instances of human trafficking from 2010-2020 in Canada

**3X MORE OFTEN**

Sexual assault and trafficking on Indigenous women and children compared to non-Indigenous

**SEXUAL EXPLOITATION  
OF MINORS**

Past and ongoing cases of sexual exploitation of minors (including Indigenous youth) known to the RCMP **in Prince Rupert**

**INDUSTRY AND  
TRAFFICKING**

Quantifiable link between extractive resource industries, and increased levels of trafficking, assault, and sex trade activities.<sup>5</sup>

DOES IT MAKE A  
DIFFERENCE?

---

Well respected and known link between industrial projects and workforce impacts on health and social service availability, housing availability, substance use, crime rates, and human trafficking<sup>1</sup>

---

As more industrial projects are built, proposed/approved, increased burden will be placed on the city and the pre-existing community health and safety issues – **Prince Rupert has already reached a critical threshold.**

# RECOMMENDATIONS

## CUMULATIVE IMPACTS

**FAST TRACKING – ‘VALUED COMPONENTS’  
NEED TO BE ACCOUNTABLE FOR SAFE/UNSAFE  
REALITIES**

**EVERYONE PLAYS A ROLE IN CHS TOPICS –  
REGULATORY OVERSIGHT**

**FACILITATE CROSS-INDUSTRY AWARENESS,  
COLLABORATION AND INITIATIVES TO  
ADDRESS CUMULATIVE INDUSTRIAL RISK AND  
REQUIRED RESOURCE ALLOCATION**

