

# PMAIS: Critical Assessment of Synergistic Impacts in the O&G Industry



**Victório Carvalho Guido, Rodolfo**

*Assistant Project Coordinator in Foundation Institute Administration – FIA Business School*

*BRAZIL*

*[linkedin.com/in/rodolfo-guido/](https://www.linkedin.com/in/rodolfo-guido/)*

*[www.fia.com.br](http://www.fia.com.br)*



# Context: Scenario and challenges

- Development projects affect biophysical and socioeconomic.
- In Brazil, these projects are subjected of an Environmental Impact Assessment (EIA).
- EIA is isolated, usually ends with license.
- It cannot analyze multiple territorial projects.
- Focused on understanding the cumulative and synergistic effects.
- New environmental licensing paradigm are needed.



# Proposal: Macro Plan's bases

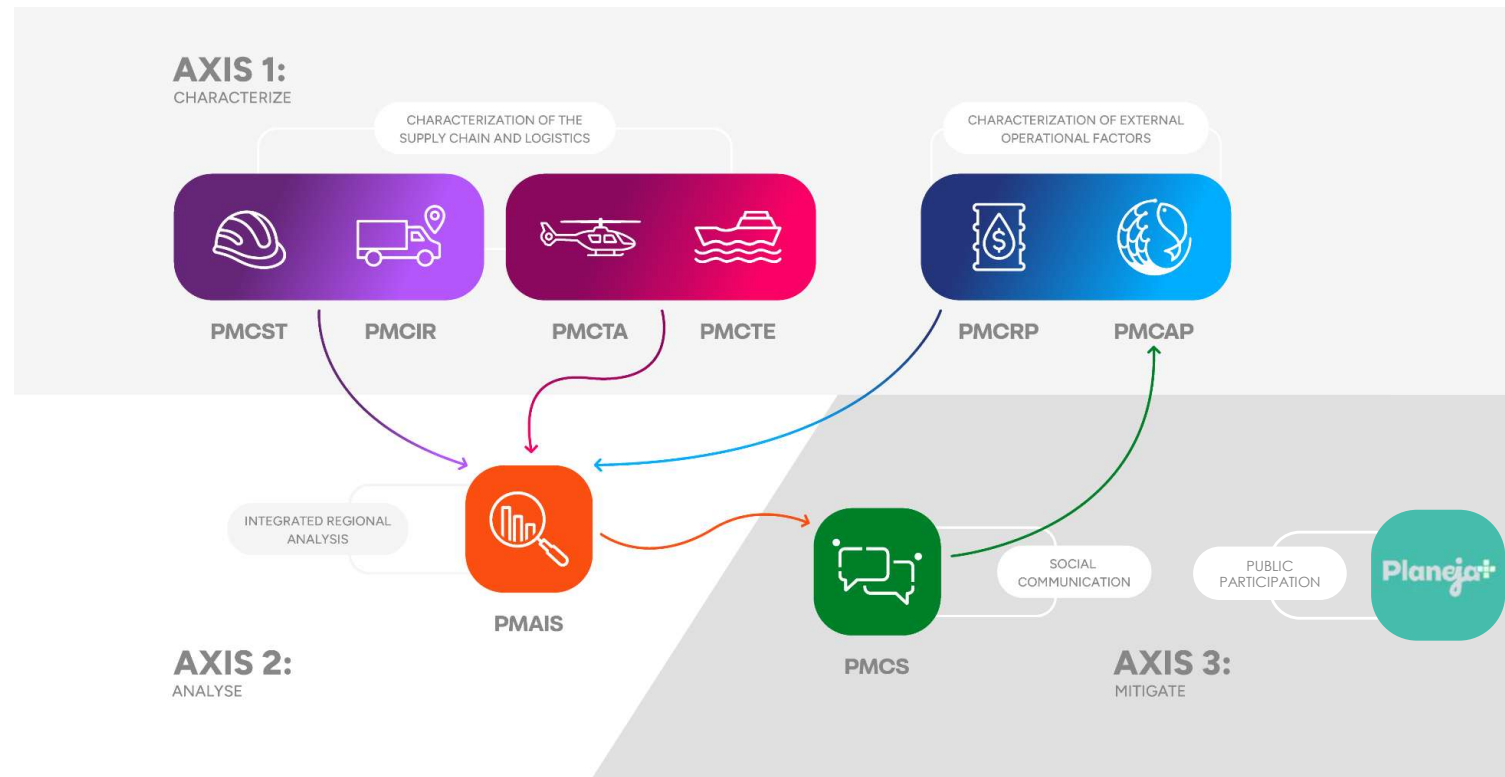
- Overcome fragmented EIA's analyses.
- Establish a centralized framework in IBAMA<sup>1</sup>.
- Promote methodological and strategic guidance for mitigation.
- Characterize phenomena linked to the O&G Industry (AXIS 1).
- Create communication channels on environmental impacts and mitigation measures. (PMCS).
- Produce integrated analyses correlating AXIS 1 with other databases. (PMAIS).



<sup>1</sup> - IBAMA (Brazilian Environmental Agency)

# Building the Macro Plan and PMAIS

- **AXIS 1: Characterize**
  - Supply chain, logistics, royalty payment and fishing activities
- **AXIS 2: Analyses**
  - Correlating AXIS 1 with other databases within a GPS framework
- **AXIS 3: Mitigate**
  - Social communication
  - Public participation
  - Others future mitigation measures



# Methodological Aspects of PMAIS

- Define concepts of synergistic and cumulative impacts.
- Establish an O&G value chain model within the Macro Plan context.
- Promote integrated assessment of social and environmental impacts.
- Develop studies to understand O&G dynamics in the Macro Plan's main region.
- Conduct critical assessment of synergistic impacts in the O&G industry using correlated data.

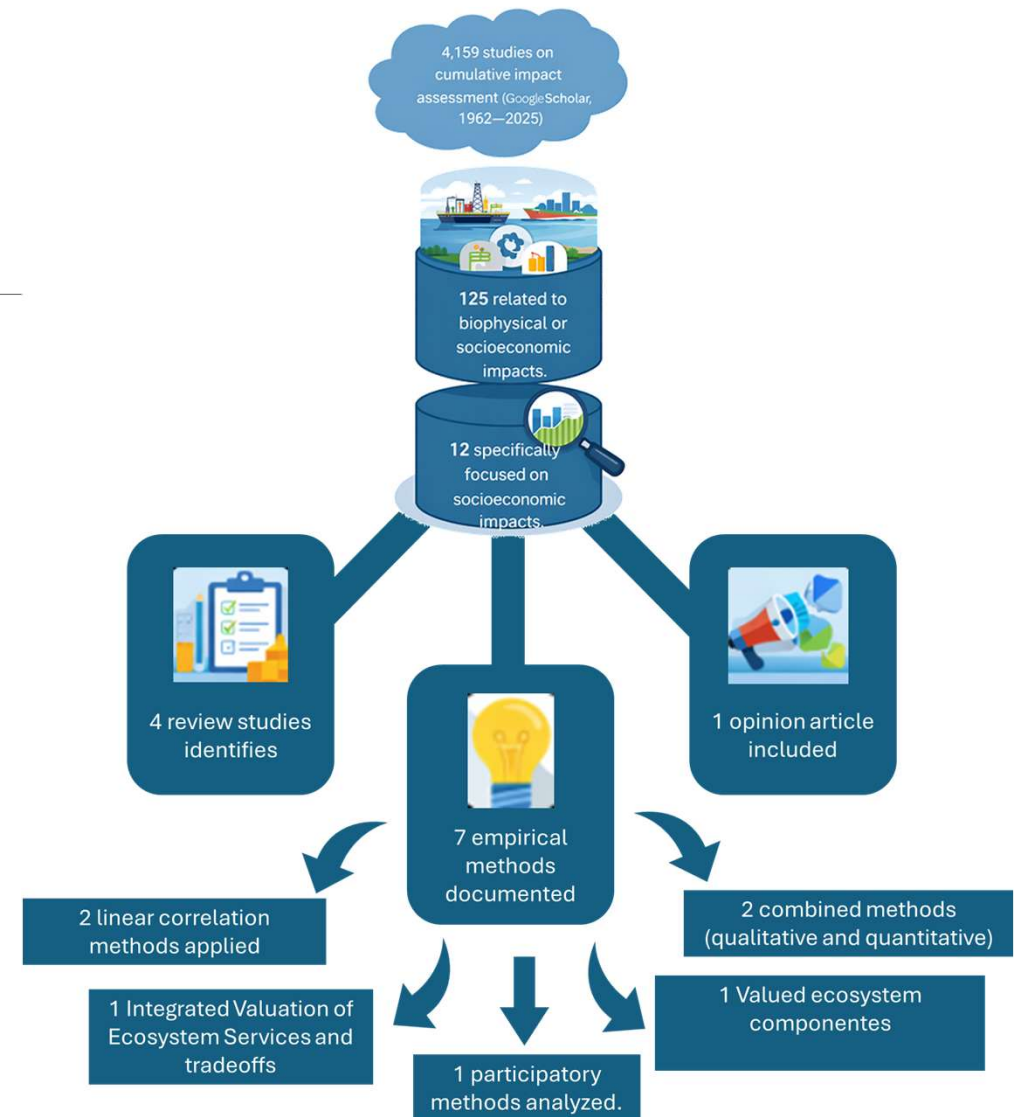


# Methodological proposal to integrated analysis



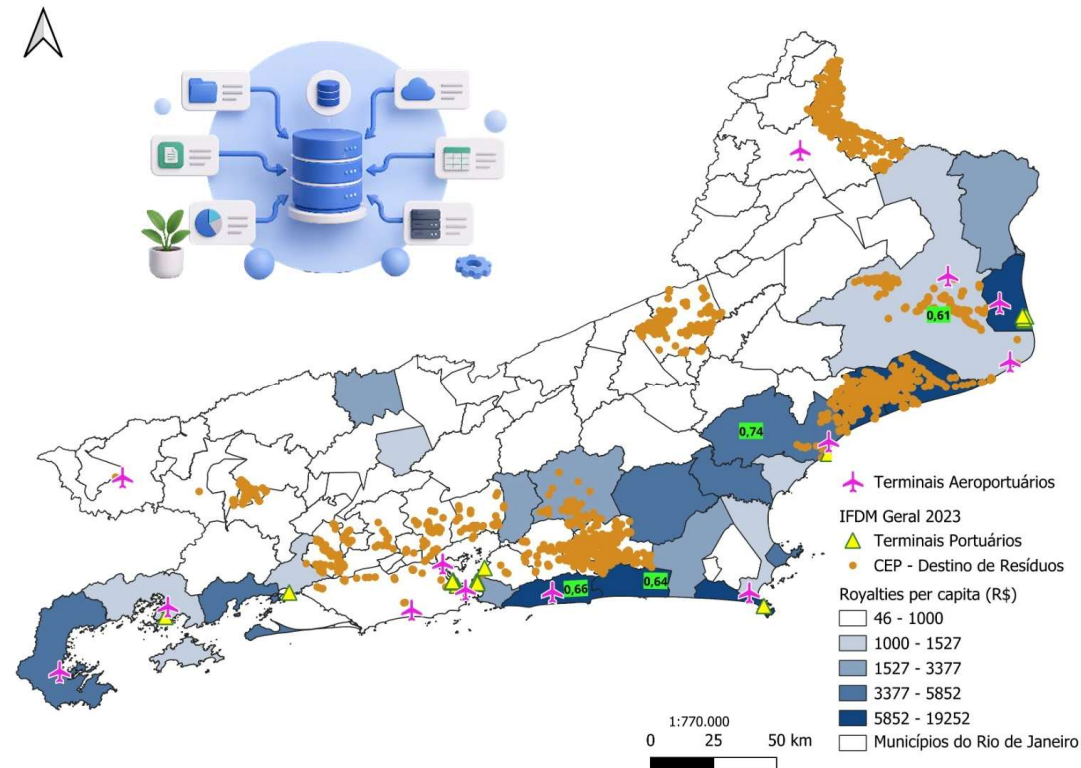
# Primary results

- Conduct systematic review of the literature including bibliometric measures.
- Consolidate state-of-art guiding method selection.
- Consider international and national experiences carefully.
- Address specific features of Santos, Campos, Espírito Santo basins.
- Only 12 specifically focused on socioeconomic impacts.



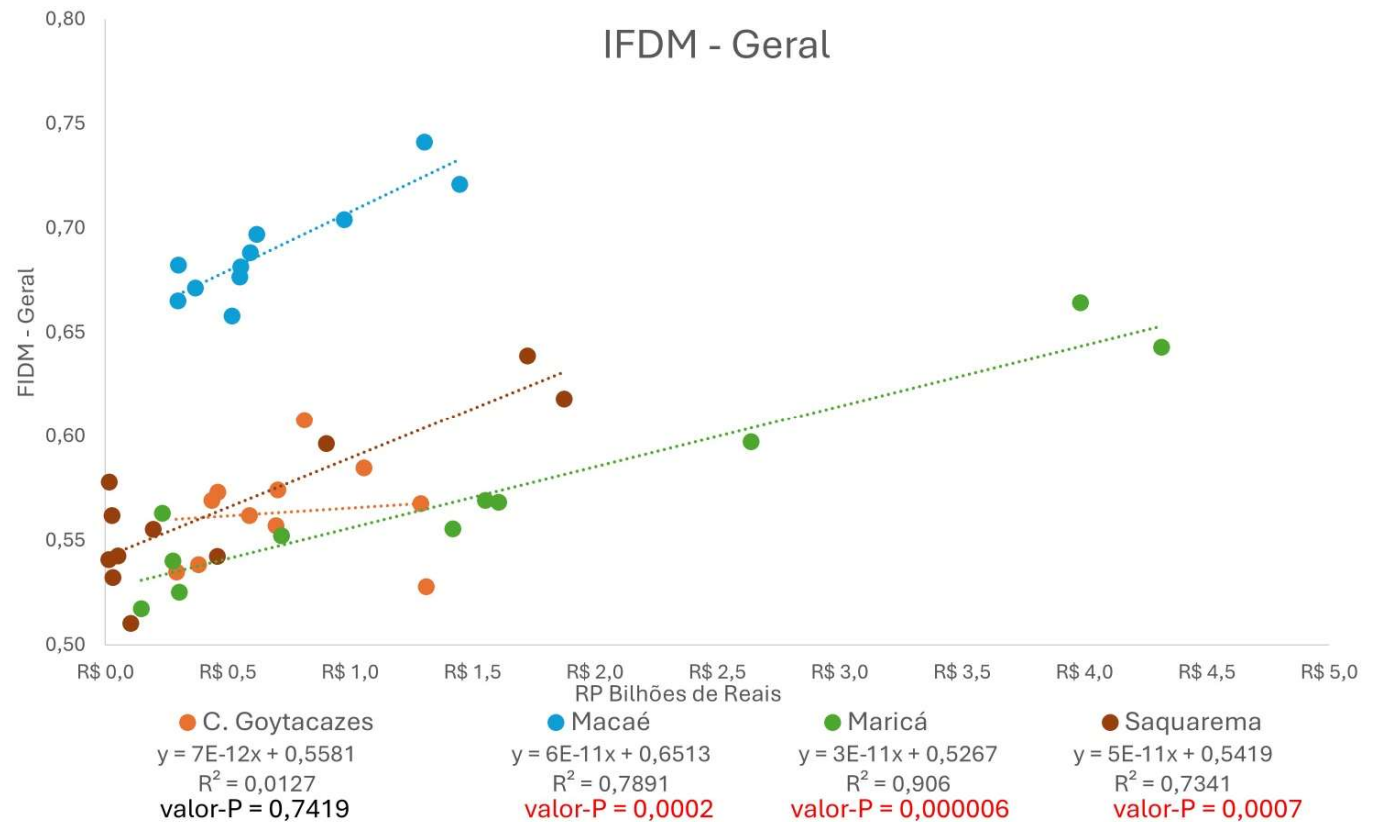
# Primary results

- Socioeconomic database built and operational.
- First program KPIs calculated from inputs.
- GPS framework fully implemented.
- Features programmed to integrate PMAIS databases in the future.
- First data received directly from O&G operators (April, 2026).
- Maps can be generated with input data.



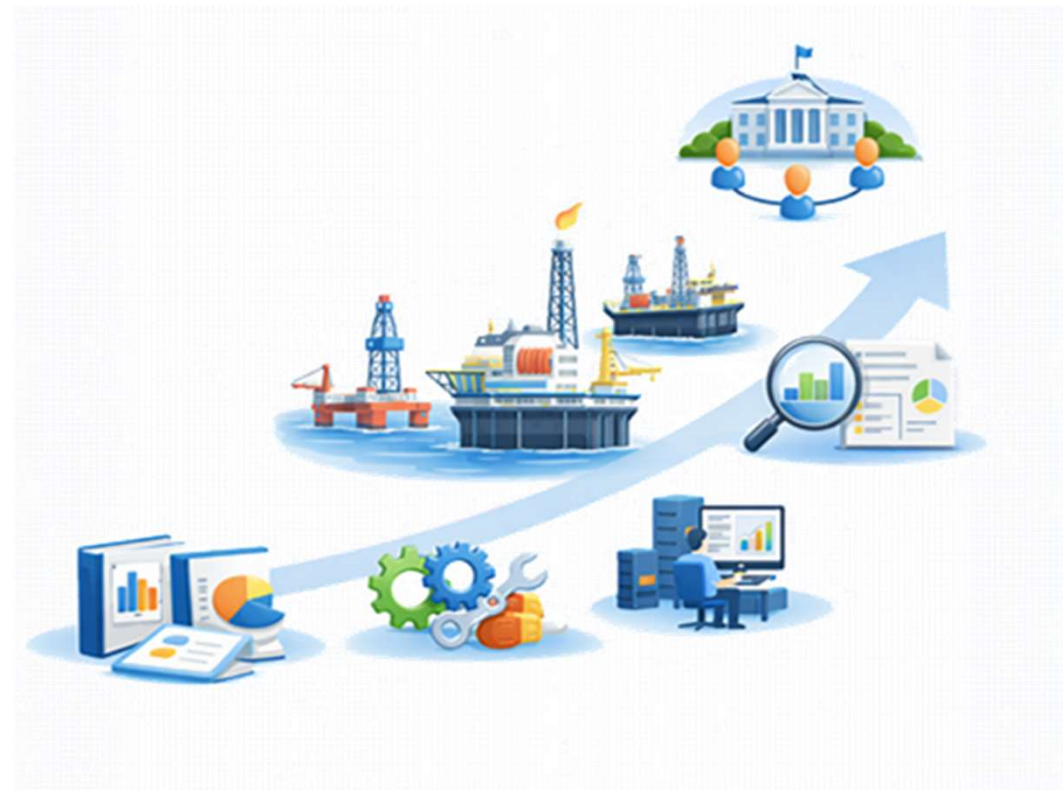
# Primary results

- Initial correlation indices between municipalities' socioeconomic development and oil revenues.



# Expected results for next years

- Construction of yearbooks to present major characterization.
- Methodological consolidation.
- Application of analyses to guide more effective mitigation actions.
- More integrated public environmental management.
- Strengthening transparency in decision-making process.
- Strengthening the IBAMA's analytical capacity.



# Contributes to assessing cumulative impacts in the Global South

---

- Economic and social development prioritized through long-term macro-regional environmental management.
- Overcome fragmented analyses in EIA.
- Strengthen governance and transparency between environmental agency and O&G operators.
- New methodologies for territorialized knowledge management.
- Ensure more effectiveness, regionalized mitigation with integrated and non-overlapping efforts.



**PLANO  
MACRO**



**PMAIS**

# PMAIS Team



**Prof. Dr. Hélio Janny Texiera**

*Projects Coordinator in FIA Business School*



**MSc Kamila Louzada Rangel**

*Executive Coordinator in ITIMS - Macro Plan Project*



**Dr. Vânia Maria Lourenço Sanches**

*Technical-Scientific Coordinator in ITIMS - Macro Plan Project*



**André Akio Motidome Cintra do Prado**

*Technical-PMO in ITIMS - Macro Plan Project*



**MSc Bruna Azevedo**

*PMAIS Analyst in ITIMS - Macro Plan Project*



**Luís Patricio Cintra do Prado Filho**

*Assistant Coordinator in FIA Business School  
Technical responsively in ITIMS - Macro Plan Project*



**MSc Lucas Citele Candido**

*Relationship Coordinator in ITIMS - Macro Plan Project*



**Débora Cubateli Redivo**

*Coordinator of integration in ITIMS - Macro Plan Project*



**Dr. Bernardo Silveira Papi**

*PMAIS Coordinator in ITIMS - Macro Plan Project*



**MSc Marcos Vinícius Santos**

*PMAIS Analyst in ITIMS - Macro Plan Project*

# Stakeholders

Implementing Entity:



Responsible Company:



Licensing Authority:



Federal Environmental Licensing Action.

Macro Plan is a conditional measure under the responsibility of the companies:



# Acknowledgments

---

On behalf of our team, I would like to sincerely thank the organizers of this congress.

We would like to thank Petrobras for supporting the ITIMS Project, and COPROD team from IBAMA for the partnership and leadership throughout the entire Macro Plan process.

I also thank the audience for their attention and interest.

Thank you very much, and we look forward to continuing this discussion beyond the congress.

PLANO  
MACRO

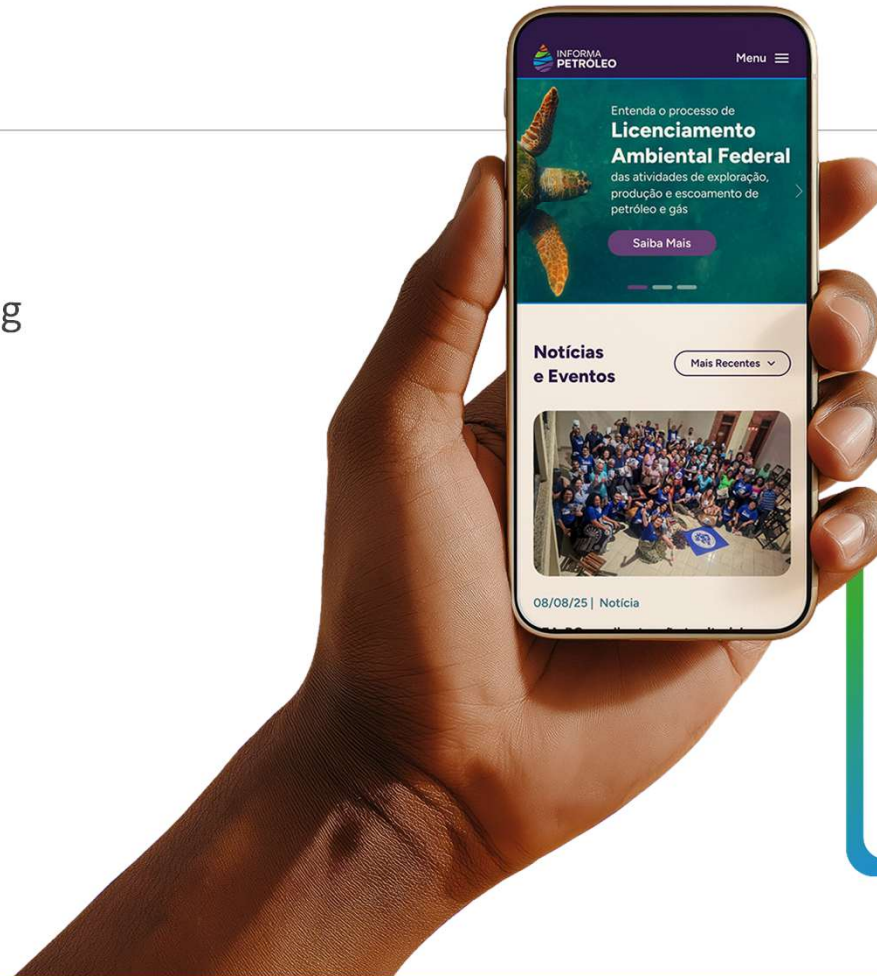


# Learn More

**Macro Plan**  
Federal Environmental Licensing  
Brazil Offshore Governance

[informapetroleo.com.br](http://informapetroleo.com.br)

*Thank you!*





# Let's continue the conversation!

Message me your questions or comments in the IAIA26 app.

**Victório Carvalho Guido, Rodolfo**

*Assistant Project Coordinator in Foundation Institute Administration – FIA Business School*

*BRAZIL*

[linkedin.com/in/rodolfo-guido/](https://www.linkedin.com/in/rodolfo-guido/)

[www.fia.com.br](http://www.fia.com.br) / [rodolfov@fia.com.br](mailto:rodolfov@fia.com.br)

**#iaia26**