

Macro Plan: Innovation in Impact Management for the Oil and Gas Supply Chain



Kamila Louzada Rangel

MSc Environment and Development, Federal University of Ceará

Brazil

www.linkedin.com/in/kamila-rangel-klr

www.fia.com.br



Context

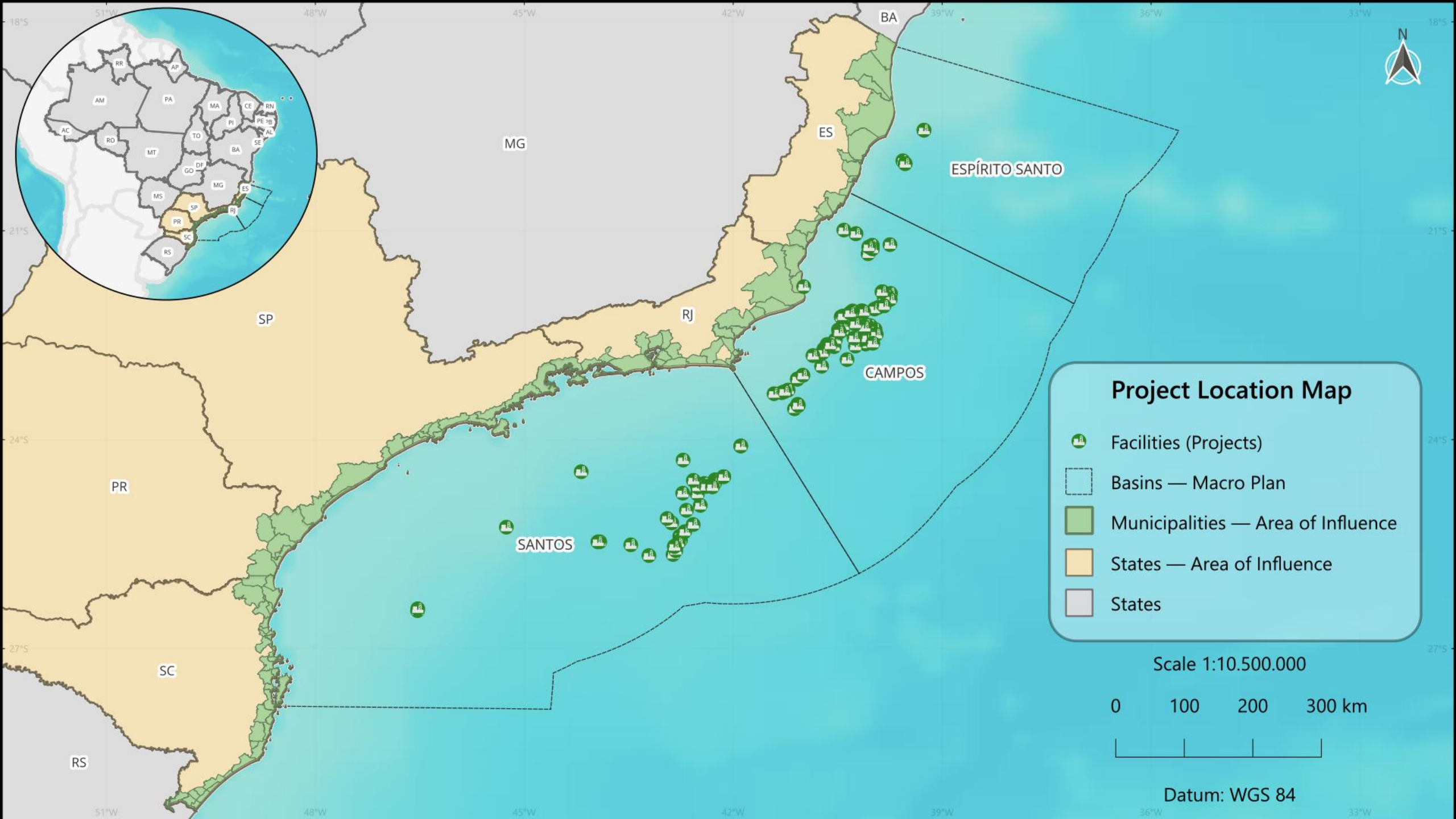
- Large-scale energy planning
- Multiple public institutions involved
- Licensing follows prior decisions
- Limited territorial decision autonomy
- Limited management methodologies
- Macro Plan challenge



What is Macro Plan

- Developed by Ibama
- Since 2019
- Macrorregional management strategy
- Offshore impacts integration
- Three major O&G Producing Basins
- Coastal-territorial influence





Regional Importance

- Brazil's main producing region
- 97.8% national production
- Offshore oil concentration
- Strategic economic relevance
- Complex territorial pressures
- Integrated governance needed



97,8%

NATIONAL PRODUCTION

Main Objectives

- Standardize methodologies
- Integrate regional monitoring
- Improve impact assessment
- Share strategic information
- Coordinate stakeholders
- Support public decisions



Implementation

- Nine active programs
- Petrobras financial support
- Seven by FIA
- Standardized methodologies
- Regional operational integration
- Completion expected 2026



UNDER FIA'S EXECUTION

Stakeholders

Implementing Entity:



Responsible Company:



Licensing Authority:



Federal Environmental Licensing Action.

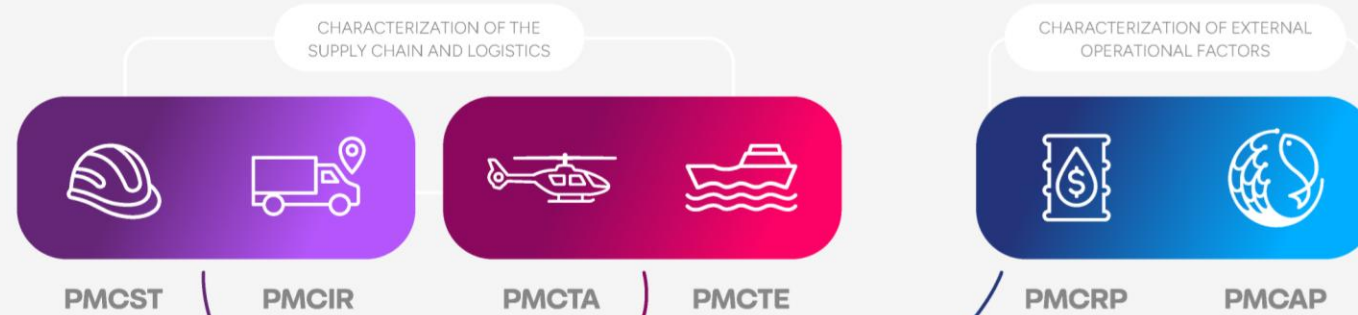
Macro Plan is a conditional measure under the responsibility of the companies:



MACRO PLAN STRUCTURE

AXIS 1:

CHARACTERIZE



AXIS 2:

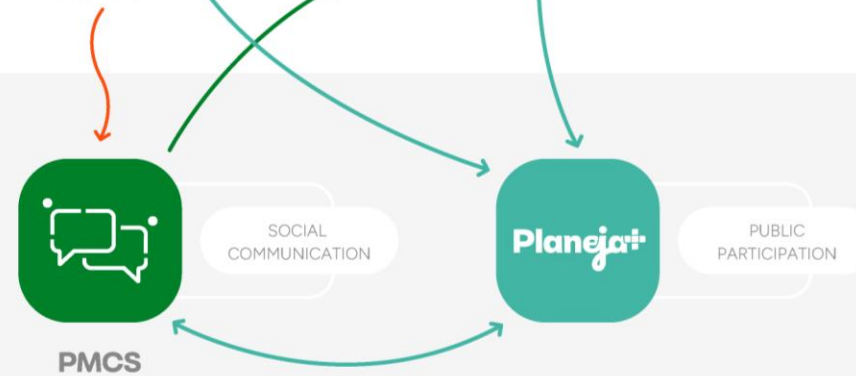
ANALYZE



AXIS 3:

MITIGATE

UNDER CONSTRUCTION



Characterization Programs

- Vessel traffic
- Aircraft traffic
- O&G workers' socio-spatial dynamics
- Supply and waste flows
- Oil revenues
- Fishing activities



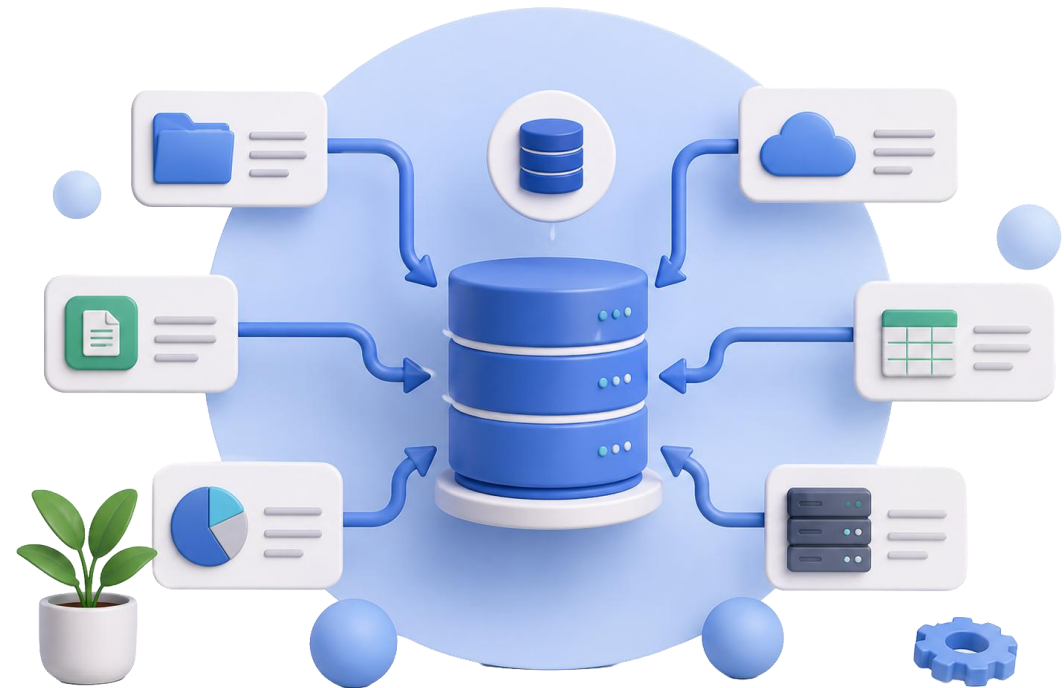
Integrated Analysis

- PMAIS program
- Cumulative impacts assessment
- Synergistic effects analysis
- Multi-source data integration
- Secondary indicators included
- Decision-making support



Socioeconomic Database

- Standardized submissions
- Data validation
- Integrated processing
- Analytical consistency
- Licensing support
- Strategic public management



Mitigation - Social Communication Program

- Unified public communication
- Environmental transparency
- Better public understanding
- Informed participation
- Qualified engagement



Mitigation – Planeja+

- Social participation
- Public budget planning
- Public policy planning
- Stronger social oversight
- Oil-dependent municipalities



Final Considerations

- Innovative Brazilian initiative
- Regional cumulative assessment
- Integrated socioeconomic evidence
- Better environmental decisions
- Local reality alignment
- Scalable methodology

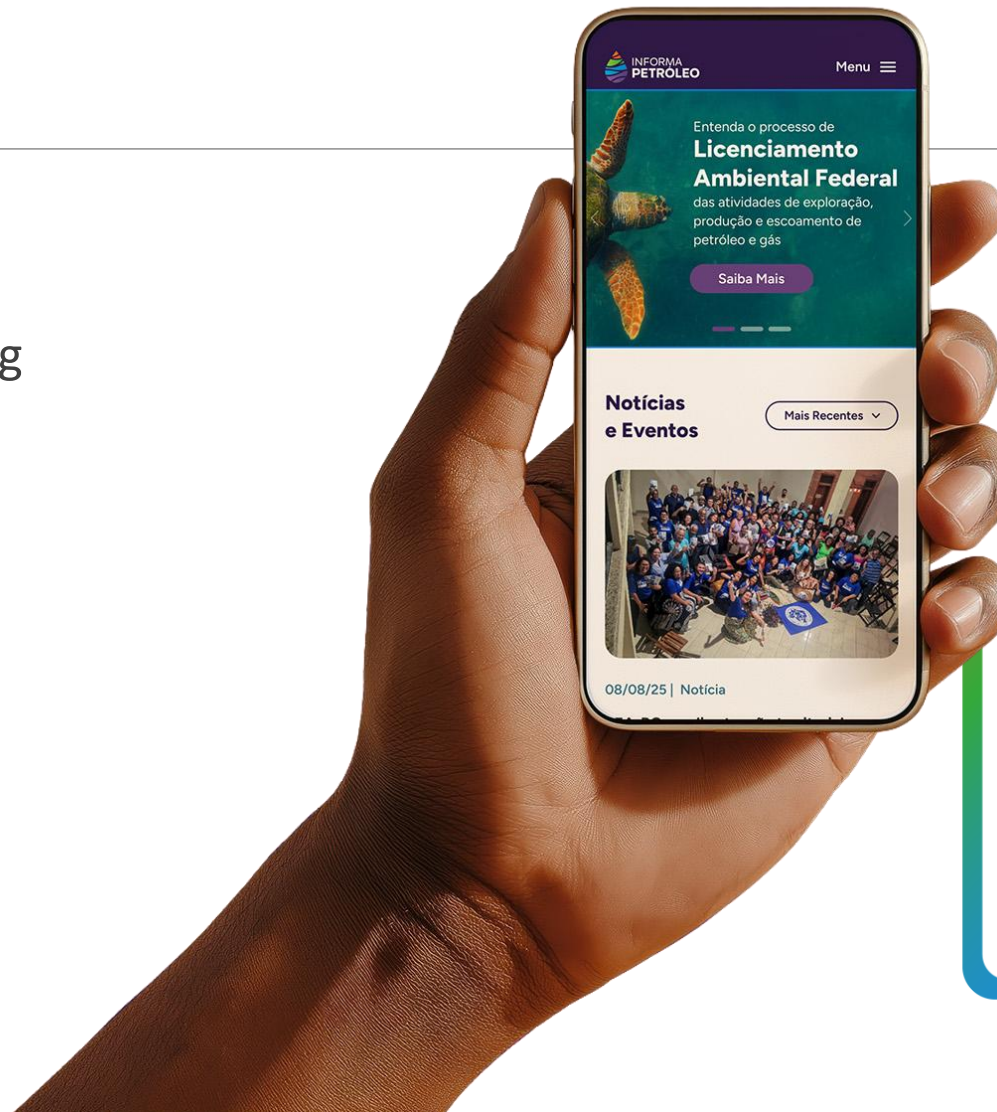


Learn More

Macro Plan
Federal Environmental Licensing
Brazil Offshore Governance

informapetroleo.com.br

Thank you!





Let's continue the conversation!

Message me your questions or comments in the IAIA26 app.

Kamila Louzada Rangel

*MSc Environment and Development, Federal University of Ceará
Brazil*

www.linkedin.com/in/kamila-rangel-klr

www.fia.com.br / kamilalr@fia.com.br

#iaia26